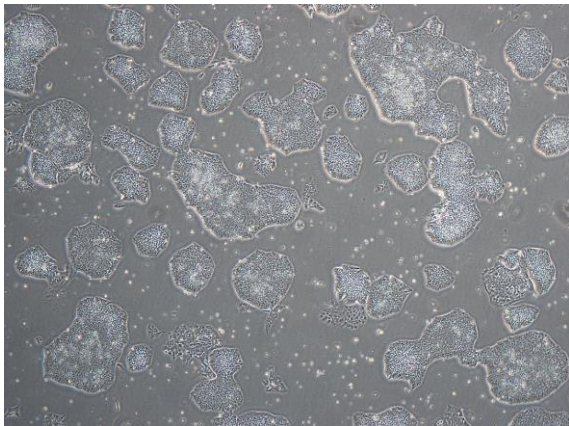
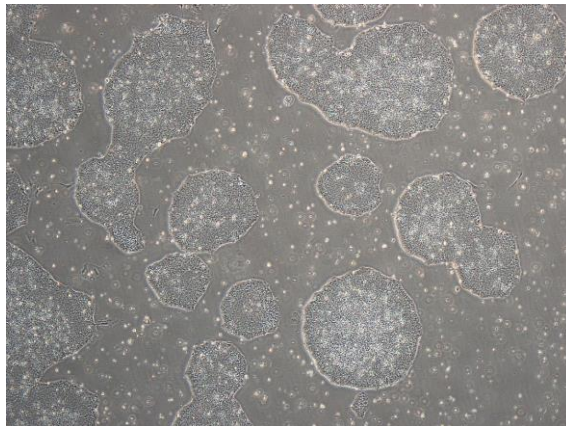


【 CiRA-j-1008 】 Morphology of iPSC colonies

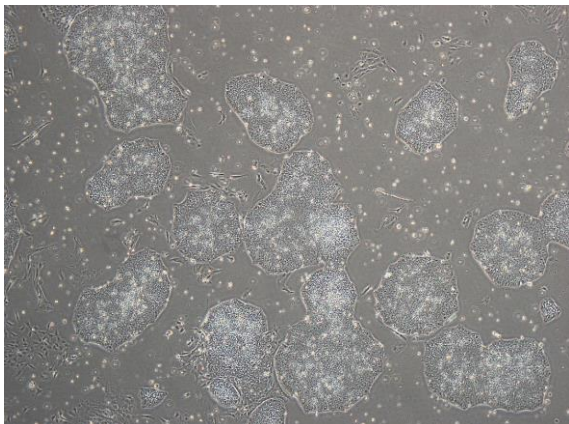
CiRA-j-1008-A: passage-2



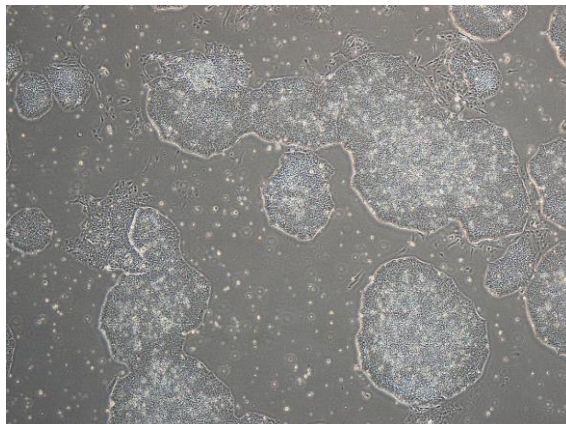
CiRA-j-1008-B: passage-2



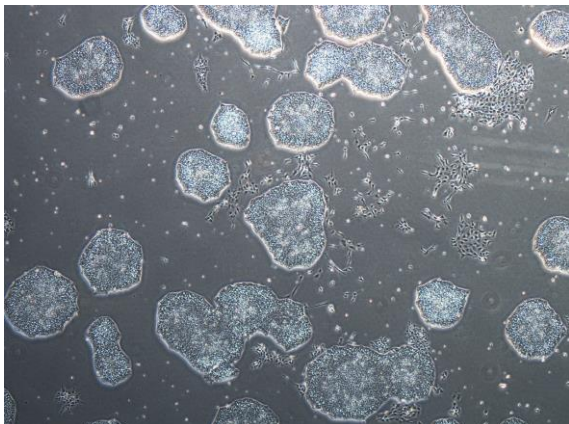
CiRA-j-1008-C: passage-2



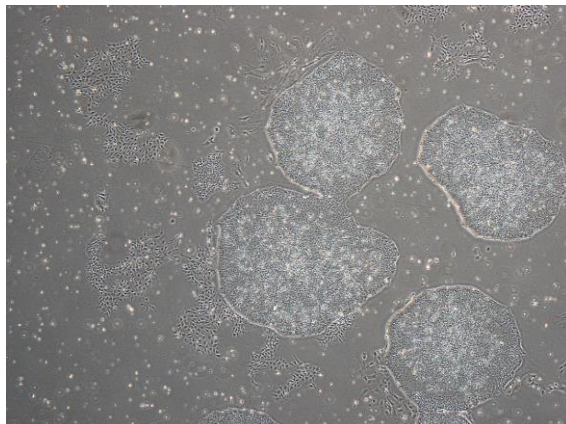
CiRA-j-1008-D: passage-2



CiRA-j-1008-E: passage-3



CiRA-j-1008-F: passage-2



(All images were captured at 4x magnification)